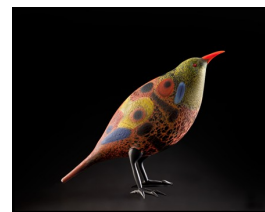


# **Carlisle** **School of Glass Art**



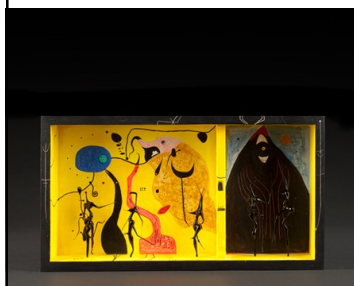
**SHANE FERRO**

## **FLAME WORKING FIGURES**



This class is designed to focus on the figure, mostly solid sculpture. We will begin with the sculpting of solid rods in the flame encompassing the human form, animals, avian, aquatic, botanical and other denizens of the natural and dream worlds. Shane will also demonstrate a blown bird and perhaps another blown sculptural object. On a practical level, we will be working with both soda-lime and borosilicate glasses and the course will be augmented by PowerPoint presentations illustrating different historical aspects of this technique.

**SOFT /BORO  
GLASS**



*Class size  
is limited!*



**Level: Beginner to Intermediate**  
**Price: \$495 + \$25 Materials**  
**Time: 10:00 am to 5:00 pm**  
**Date: Oct. 8th,9th,2016**

**Bio:** Shane Ferro was born in Chicago, IL in 1953 and has been a flame worker for 46 years and maintains a studio next to Penland School in North Carolina. He participates in international symposia and conferences by lecturing and demonstrating. Ferro is also an educator and has taught at institutions such as Penland School, Urban Glass, the Pratt Fine Arts Center, the Studio of the Corning Museum of Glass, the University of Michigan, Eugene Glass School, Espace Verre, Montreal, Quebec, the Pittsburgh Glass Center, Pilchuck Glass School, Bild-Werk, Frauenau, Germany, the International Glass Festival in Stourbridge, UK, Scuola Bubacco, Murano, Italy, Chameleon Studio, Tasmania, Taiwan, Australia and in Seto, Osaka, and the Nijjima Glass Art Center in Japan. His work can be found in collections both private and public institutions worldwide. He has had 30 solo exhibitions since 1992 and has participated in over 400 group exhibitions during his career. He has been honored with three retrospectives; a 30 year at the Berkowitz Gallery at the University of Michigan in 1999, a 40 year at the Huntsville Museum of Art in 2008 and at the Christian Brothers University in 2010. His work can be found in over 20 museum collections worldwide including the Museum of Art & Design, NY, GlasMuseum, Denmark, the Asheville Art Museum, NC, the Huntsville Museum of Art, AL, the Museum fur Glaskunst, Lauscha, Germany, and the Nijjima Contemporary Glass Museum in Japan. He is the Past-President of the Board of Directors of the Glass Art Society and received the Lifetime Membership Award from GAS in Chicago in 2014.



**To Enroll call: 856-825-0627 or**

**Visit our website: [carliseschoolofglassart.com](http://carliseschoolofglassart.com)**

**Email: [carlisle@carlismachine.com](mailto:carlisle@carlismachine.com)**

412 S. WADE BLVD.

MILLVILLE, NJ 08332